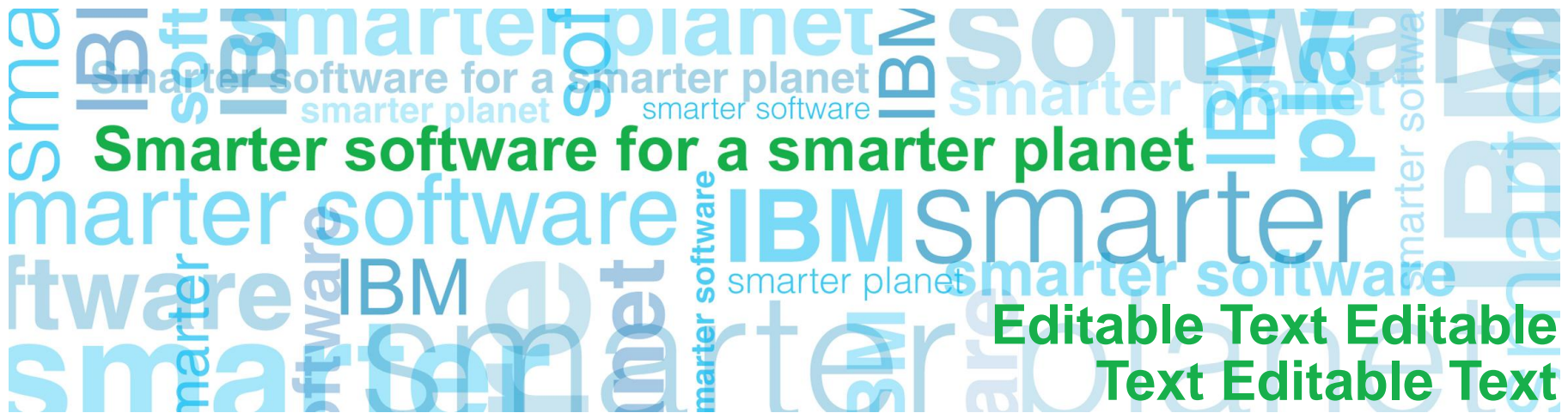


Government by Design

Techniques for Designing and Managing the Business of Government

Jim Amsden (jamsden@us.ibm.com)



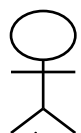
No matter the variable forces at play, often the core issue is the lack of a cohesive and inclusive process

Careful and proper information management helps you:

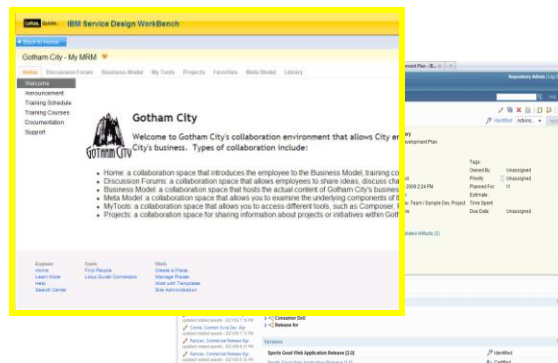
1. **Do the right things:** through results-based budgeting and policy analysis
2. **Do things right:** through performance assessment and management aligned with policy initiatives
3. **Manage change:** for continuous refinement of delivered services through process optimization to deliver the results citizens want at a price they are willing to pay

The Rational Service Design Workbench provides the tools needed to help address challenges and deliver results

Business User

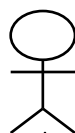


Lotus Connections,
SA/XT, SA Publisher

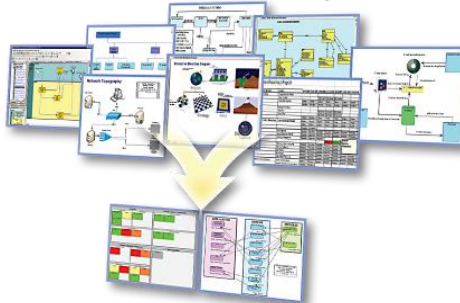


- Collaborate – forums, wikis, news, defects, enhancement, etc.
- Capture, validate and reason about model content
- Review business component content published from SA
- Optional: Review and edit Public Sector Model with SA/XT

Business Analyst



System Architect,
RAM, RPE, Cognos

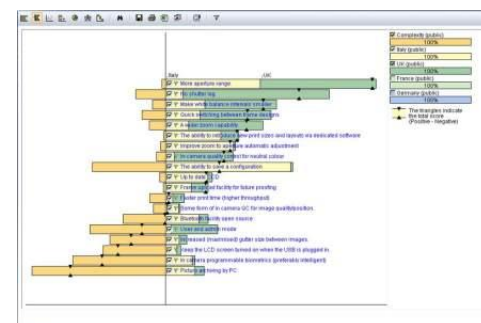


- Create & manage business components
- Build relationships between components
- Query business components
- Compare business components in one municipality or across municipalities
- Import/Export business component matrices
- Elaborate on business components with documents, BPMN diagrams, UC diagrams
- Compare and merge content from different analysts

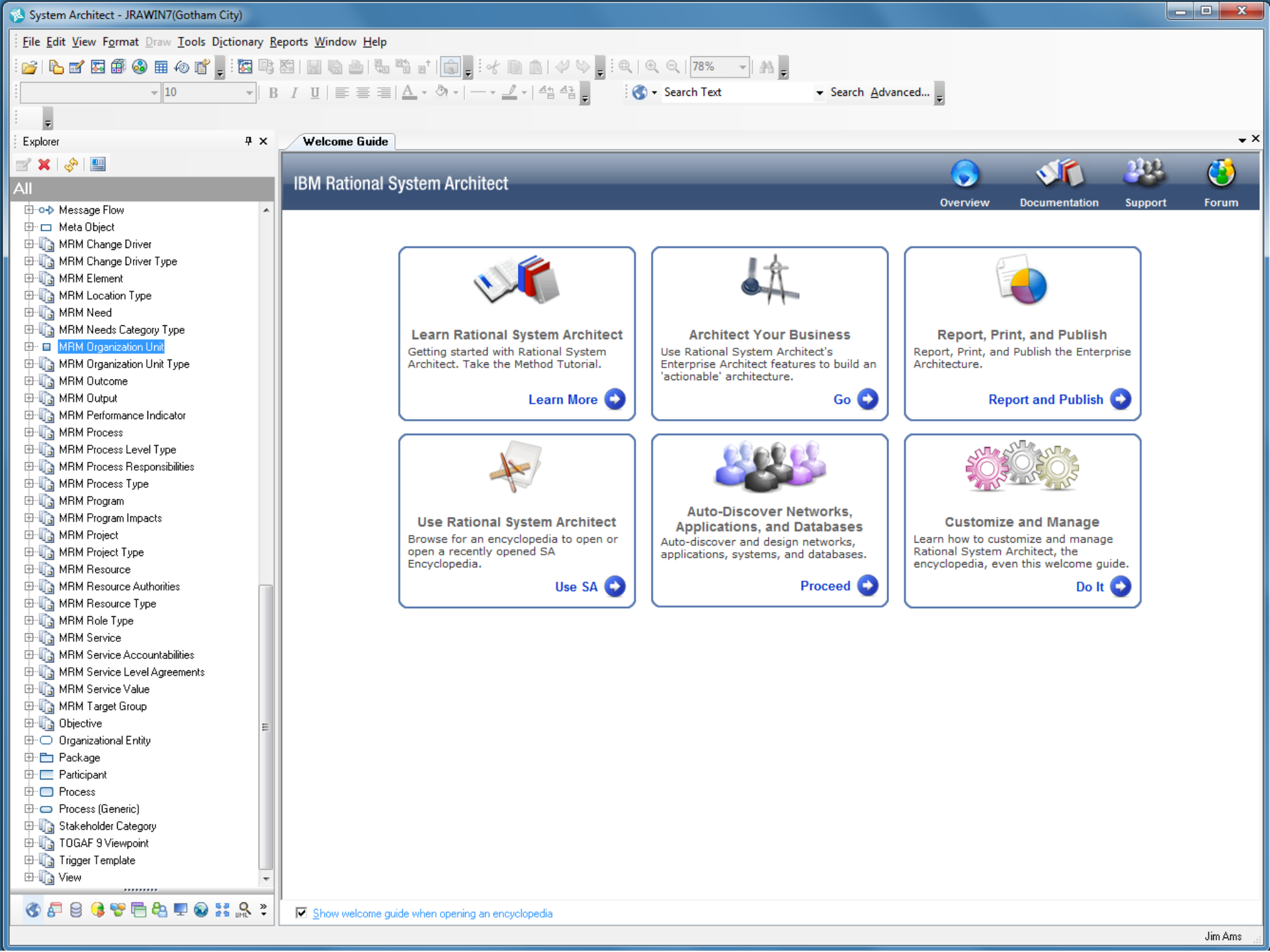
Planner

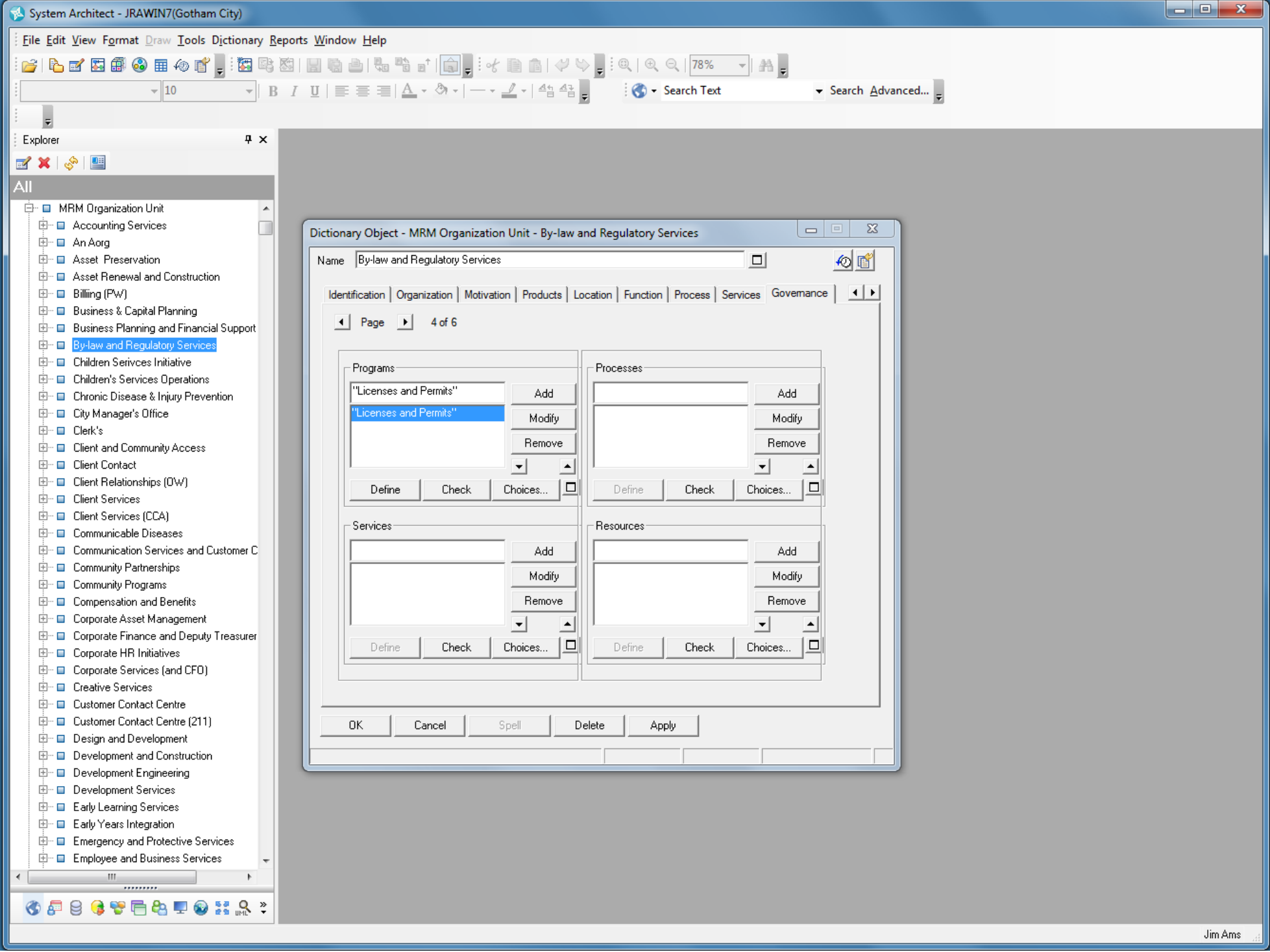


Focal Point, Cognos



- Perform cost/benefit analysis
- Weight user importance against factors such as cost, development times, and available resources
- Build, buy, or outsource decision
- Optimize program and asset operations/maintenance





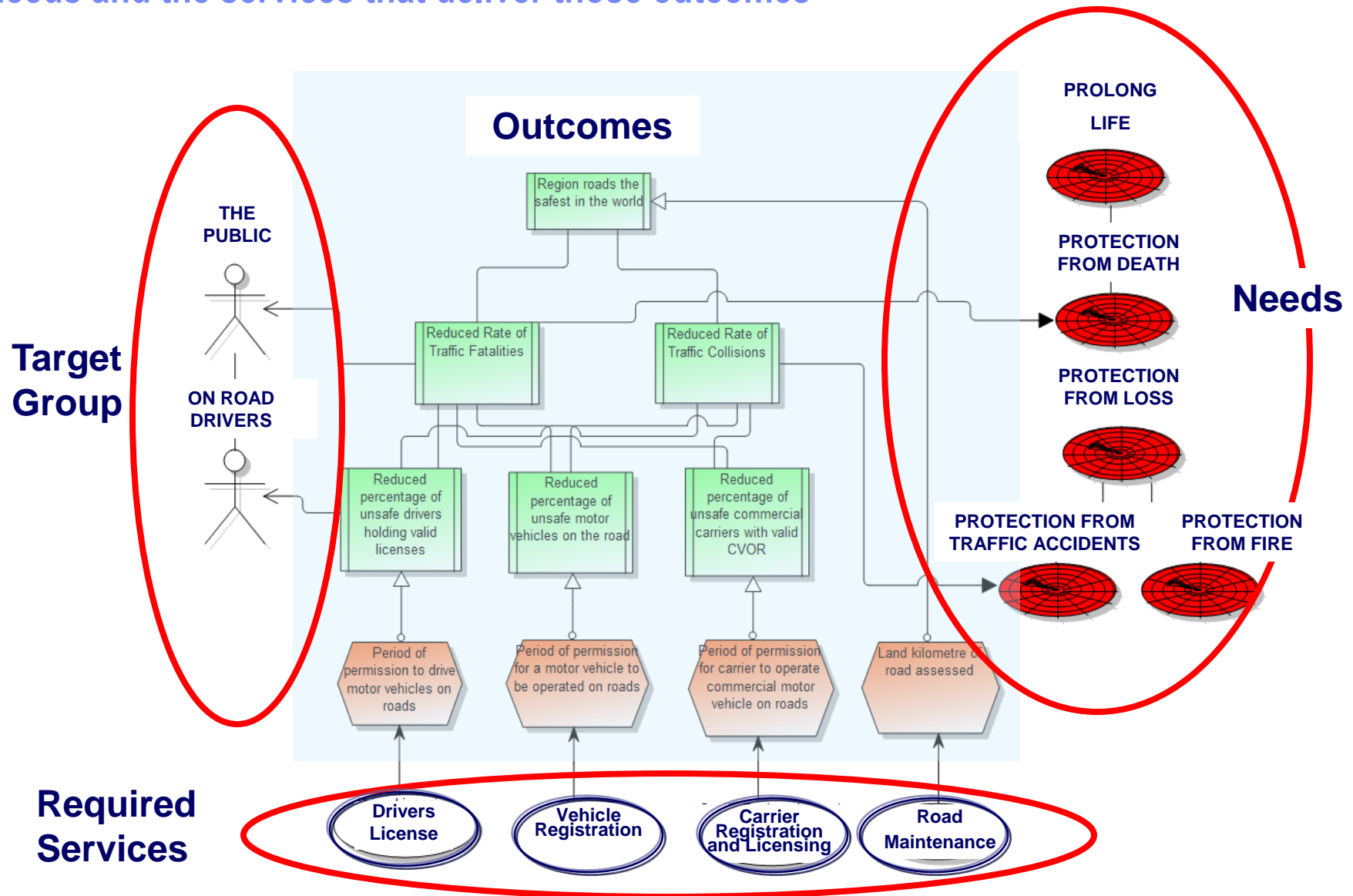
MRM can be used in a number of ways to facilitate results-based government

- **Strategic Planning** - Determining results you wish to achieve and the strategies for achieving them
- **Public Sector Business Architecture** – Designing the programs and services that deliver the outcomes that address citizens' needs
- **Budgeting for Outcomes** - Determining the services and service levels that provide the outcomes citizens want at a price they are willing to pay
- **Performance Management** - Assessments of performance indicator actual vs. target values to drive operational improvements and inform future strategic planning activities to close the right performance gaps
- **Identify opportunities to exploit Information Systems solutions** – Define the associated applications, data sources and platform technical architectures in support of the efficient, cost effective realization of public services – delivering more with less through IT exploitation

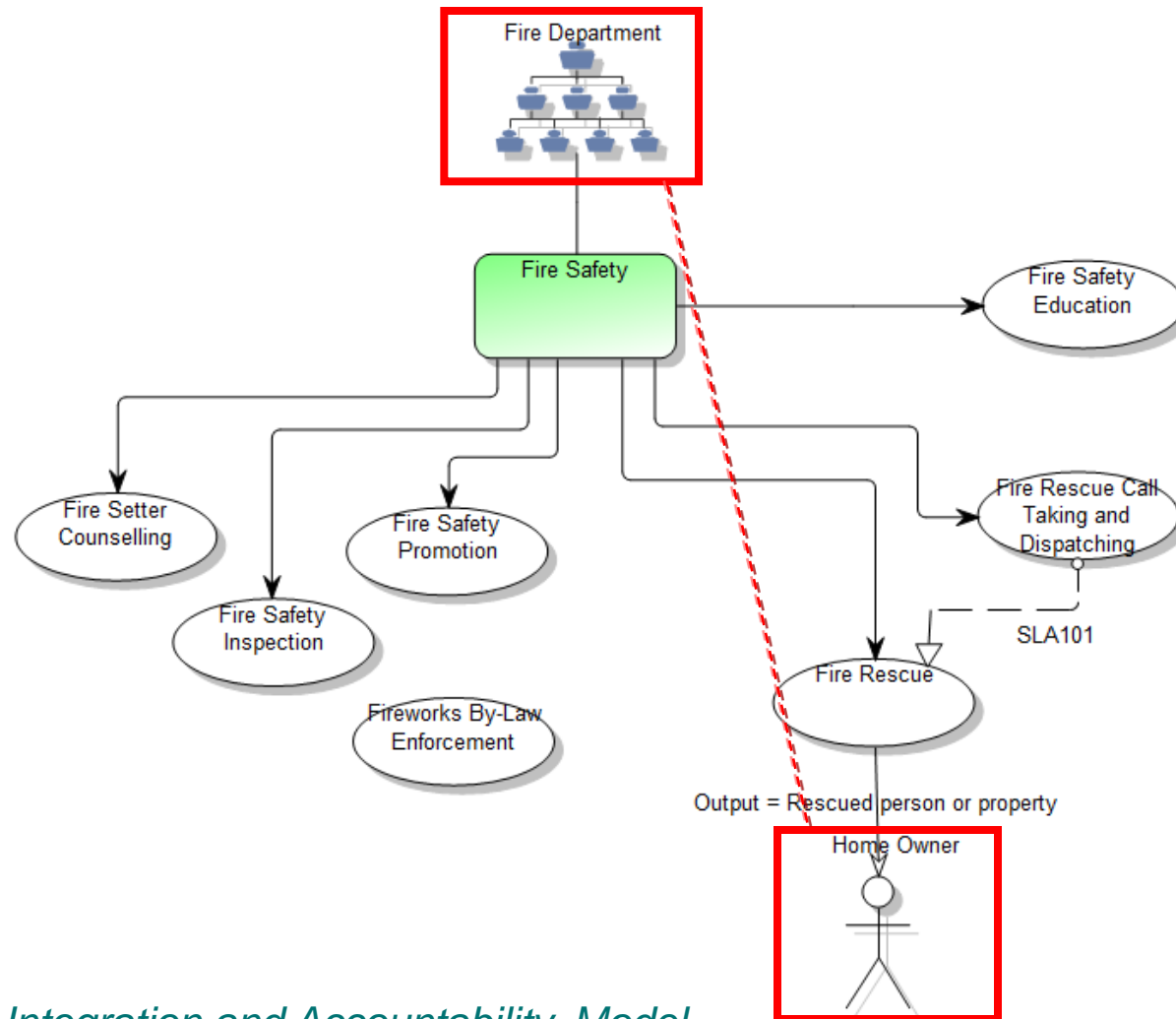
Organizing city goals into specific results areas allows you to connect services to goals and outcomes



A Program Logic Model show the outcomes required to address target group needs and the services that deliver those outcomes

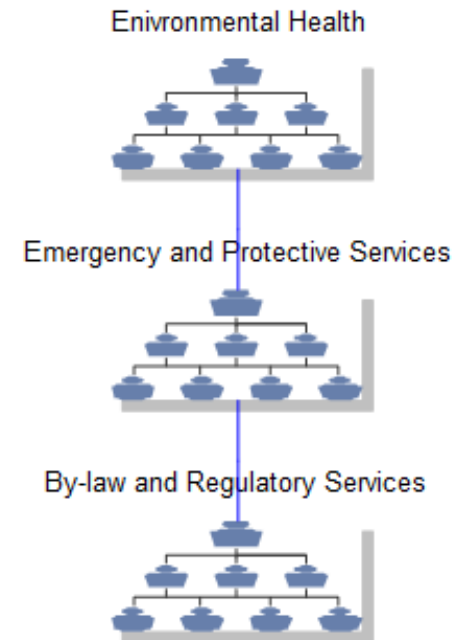
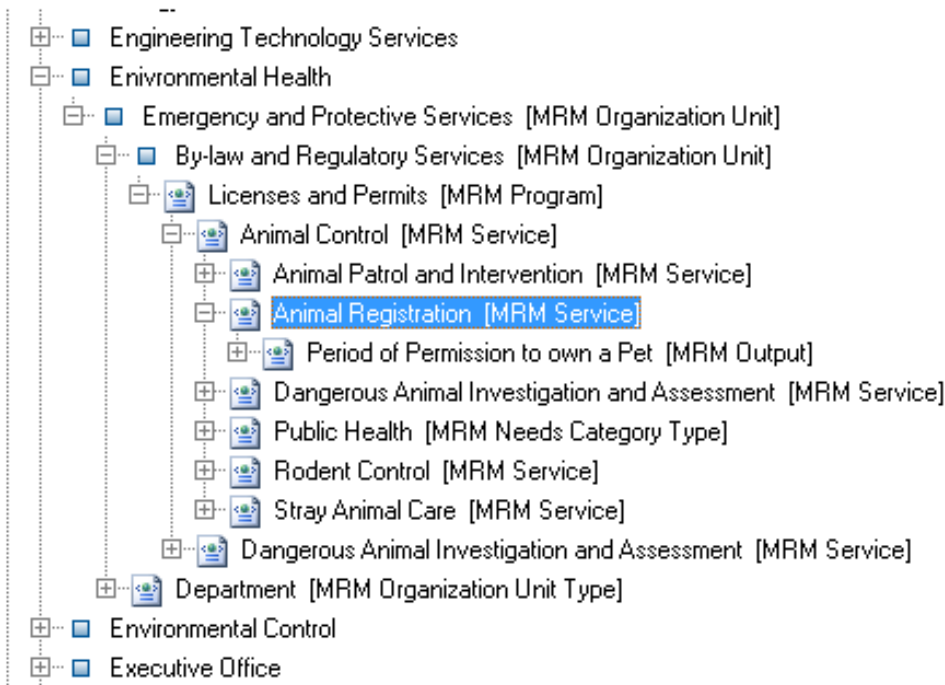


Connecting goals to outcomes requires showing the accountability from government organizations to citizen target groups



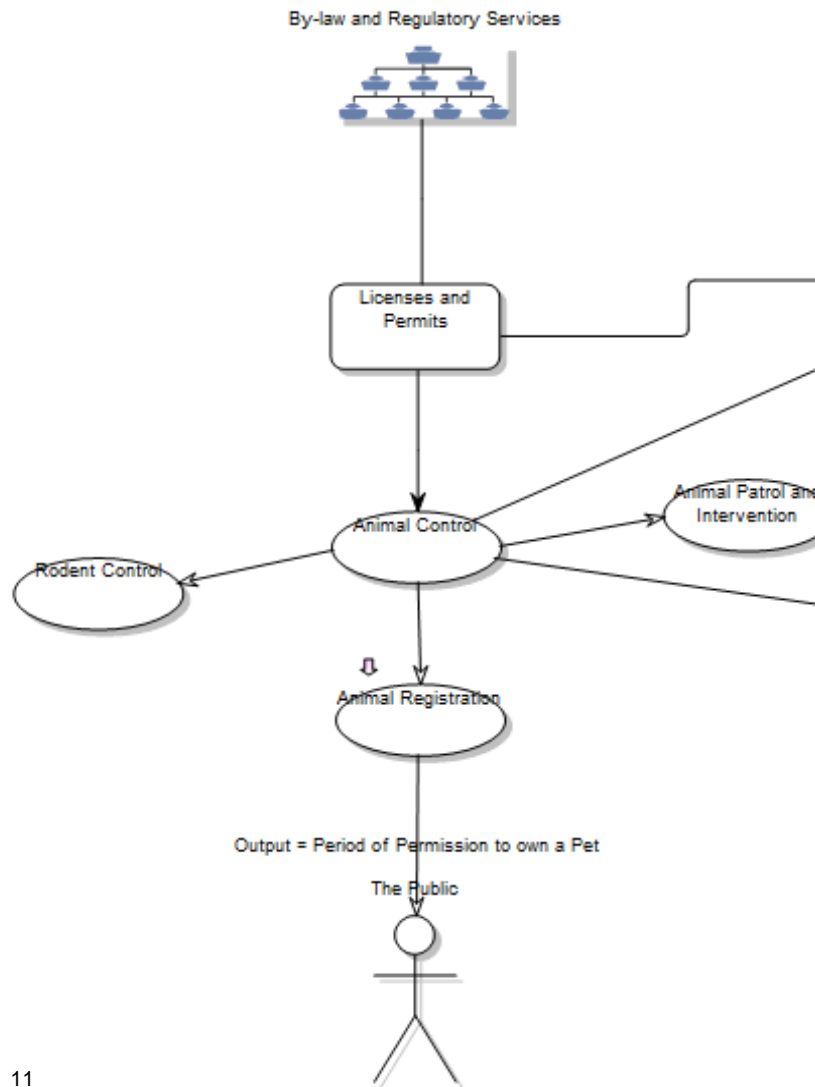
Service Integration and Accountability Model

Consider the problem of animal control in Gotham City

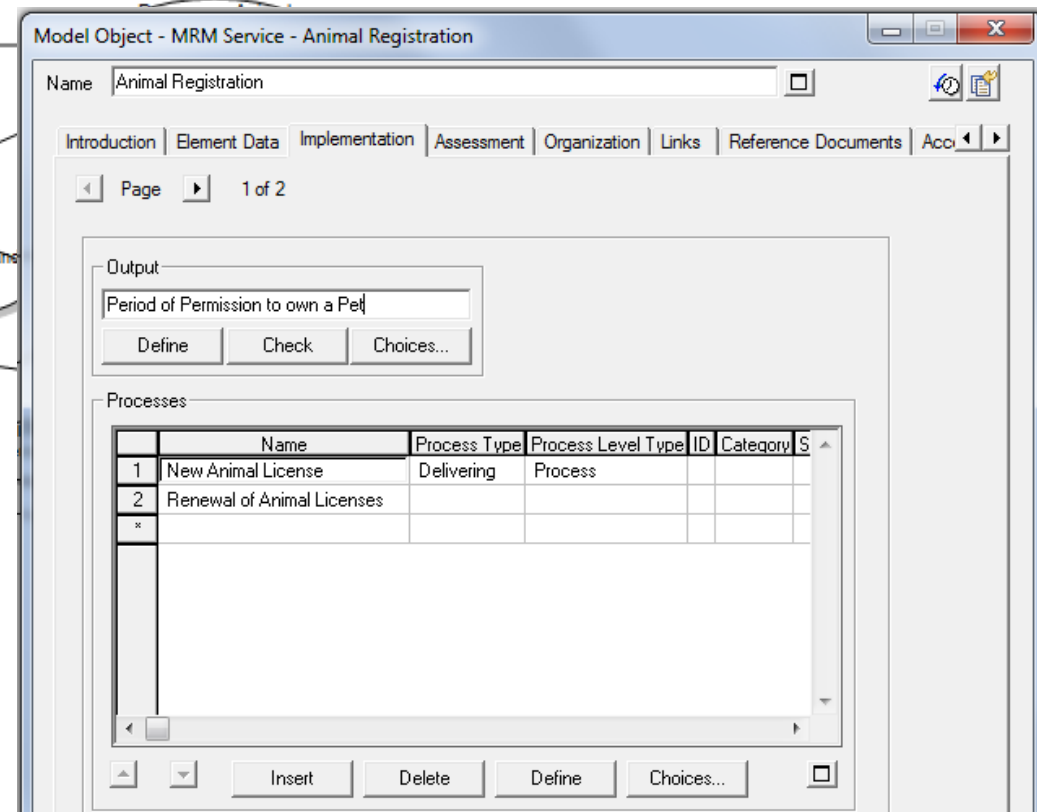


- We start by exploring accountable organization units
- This diagram shows the organization unit hierarchy that is in the problem scope
- By-law and Regulatory Services is accountable for the Licenses and Permits program
- This program delivers public health outcomes

A SIAM diagram shows policies for what the organization units are accountable for and to whom

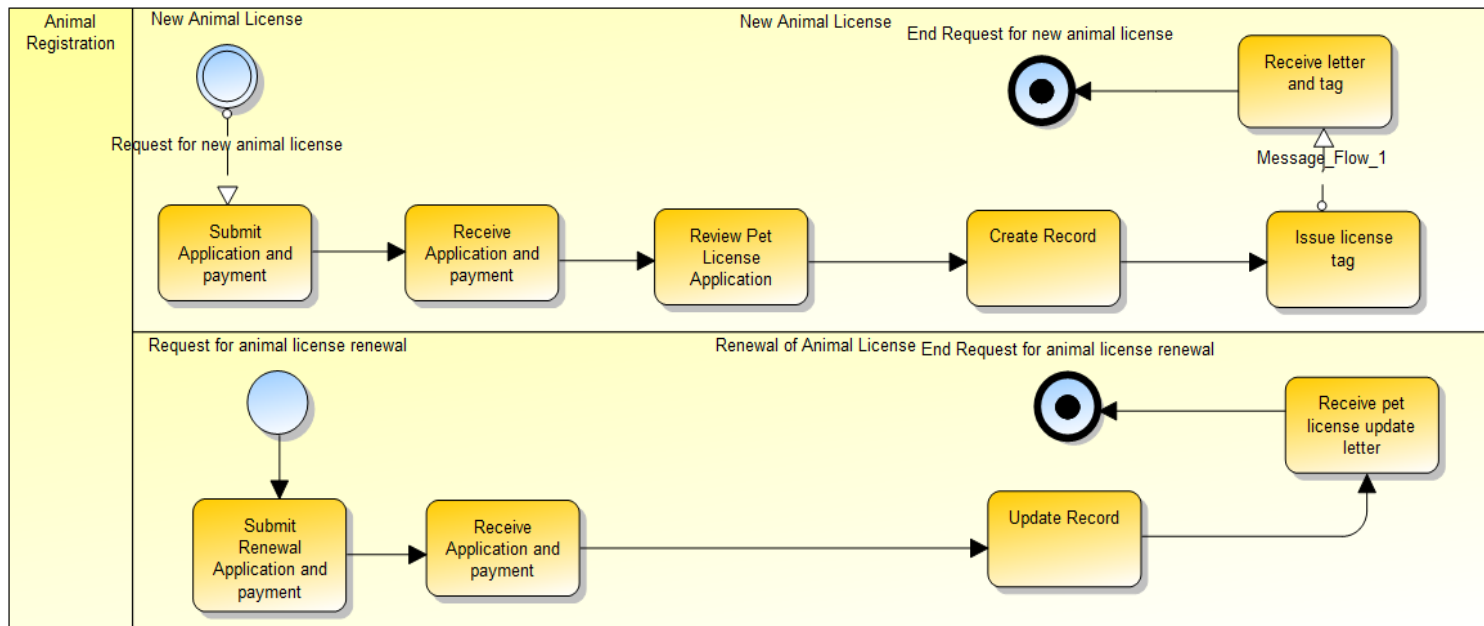


- The Animal Registration service has a child diagram that is a BPMN processes for the implementation of that service (chart 35)



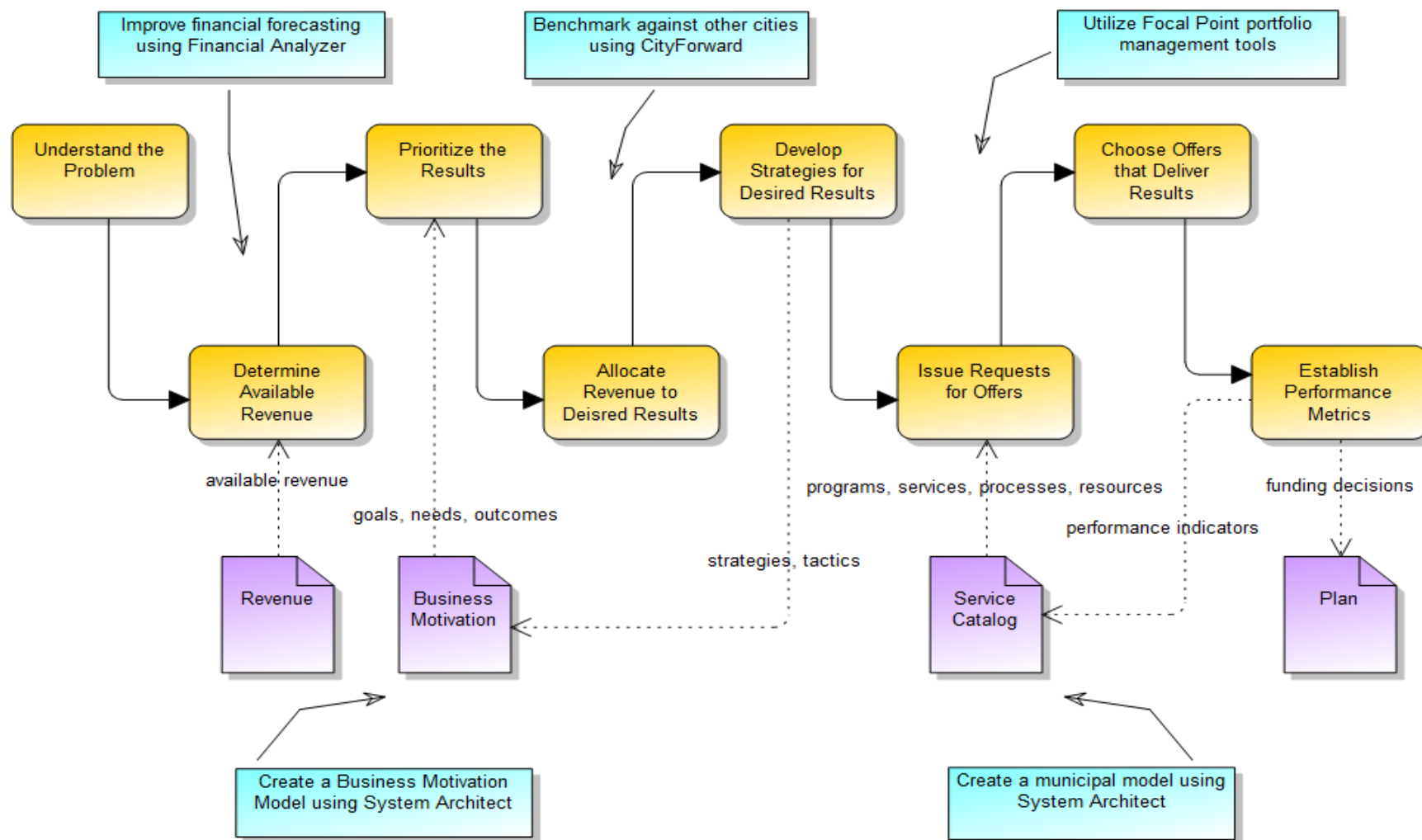
Implementation of a service, possibly involving multiple processes

- The Animal Registration service is implemented using two processes



- Pools represent services while lanes can be used to depict the different processes that are involved in implementing the service
- Message exchanged between services represented by pools can describe the details of the interactions between services described by their service level agreements.

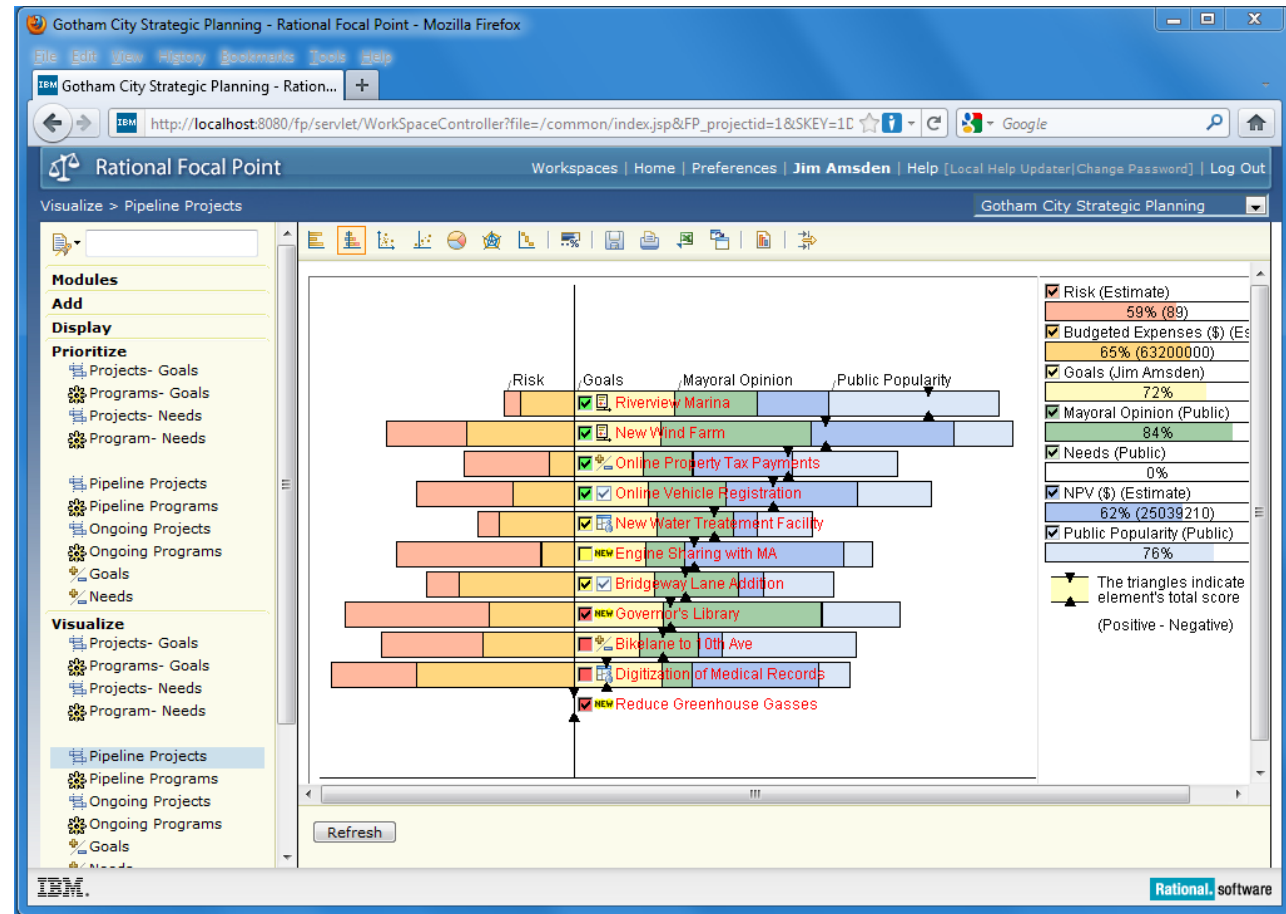
Planning requires a process that delivers the best results from available revenue



Budgeting For Outcomes

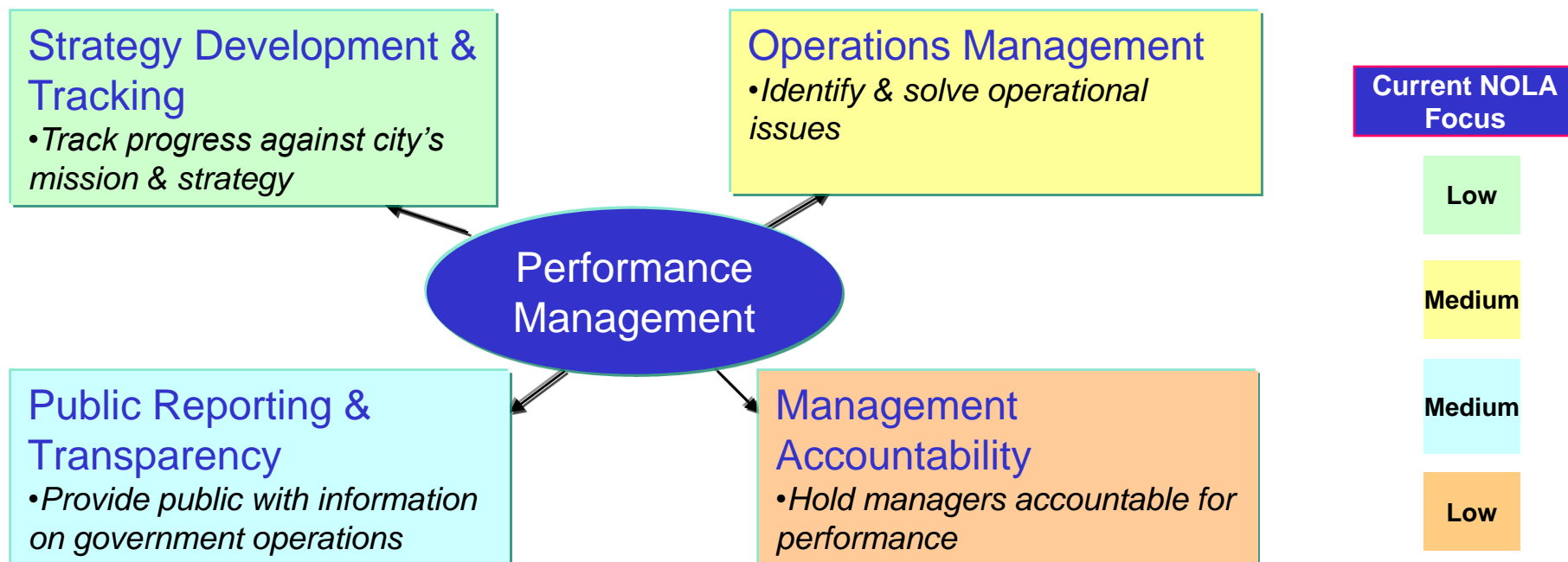
Do what-if scenarios to determine the impact of choices

- What programs are we proposing to change and why?
- Which projects should we invest in to maximize outcomes while minimizing costs?
- Is our project portfolio aligned with our goals?
- Are we incurring acceptable levels of risk?
- What are the potential effects of various choices we might make?



Planning and Performance Management – Analysis / Recommendations

Performance Management can be enriched following agreement on reporting focus



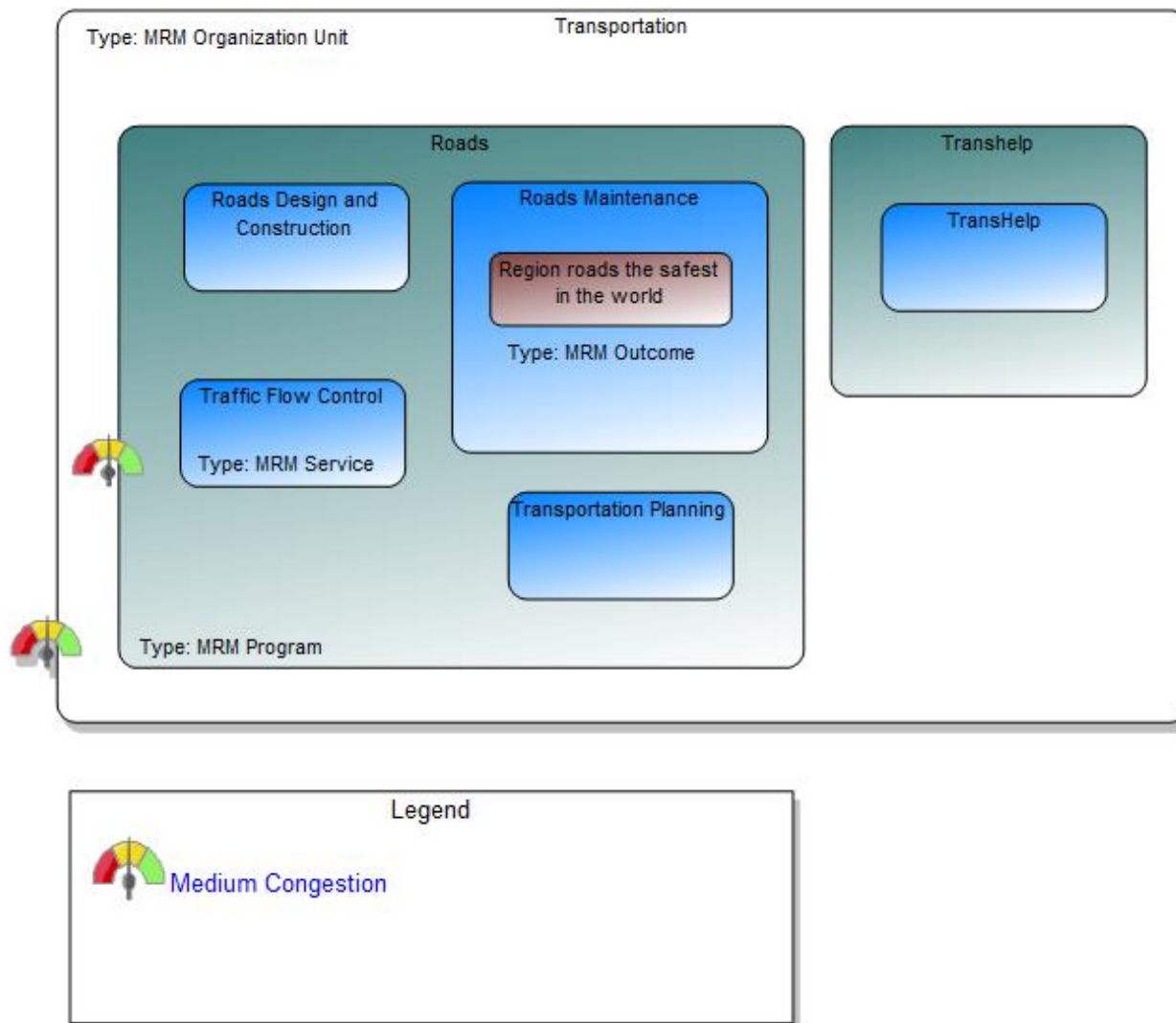
Priority Enhancements

- Develop 'State of the City' Scorecard or Mayoral Dashboard
- Automate existing reports while improving KPIs

Followed by:

- Deeper operational performance reporting in select areas
- Evolution of BlightStat to increase strategic focus
- Adoption of new STAT programs for multi-agency, cross-sector issues
- Extended public information sharing on neighborhood outcomes

Use heat maps to visualize performance gaps and problem areas



Connecting Business and IT: Use the TOGAF ADM as a method for creating and evolving your enterprise architecture to meet business needs



The Service Delivery Workbench and related SaaS offerings can be delivered in the Cloud

- [Planning and Budgeting for Smarter Government Powered by CloudOne](#)
- IBM Rational System Architect – Core SDW capabilities
- IBM Rational System Architect Publisher Add – to publish models to the web
- IBM Rational System Architect XT - for business analyst Web Access
- IBM Rational Publishing Engine – for document generation
- Rational Focal Point – for prioritization, planning and portfolio management
- Lotus Connections (or Lotus Quickr) – for collaboration on planning and other activities within and across government organizational boundaries
- MISA MRM VPC – For the purpose of managing and governing the MRM by the MRM Working Group as directed by the MRM Steering Committee
- Hosting Services:
 - Standard 2-5 Product offering
 - 25G storage included
 - Standard BW included